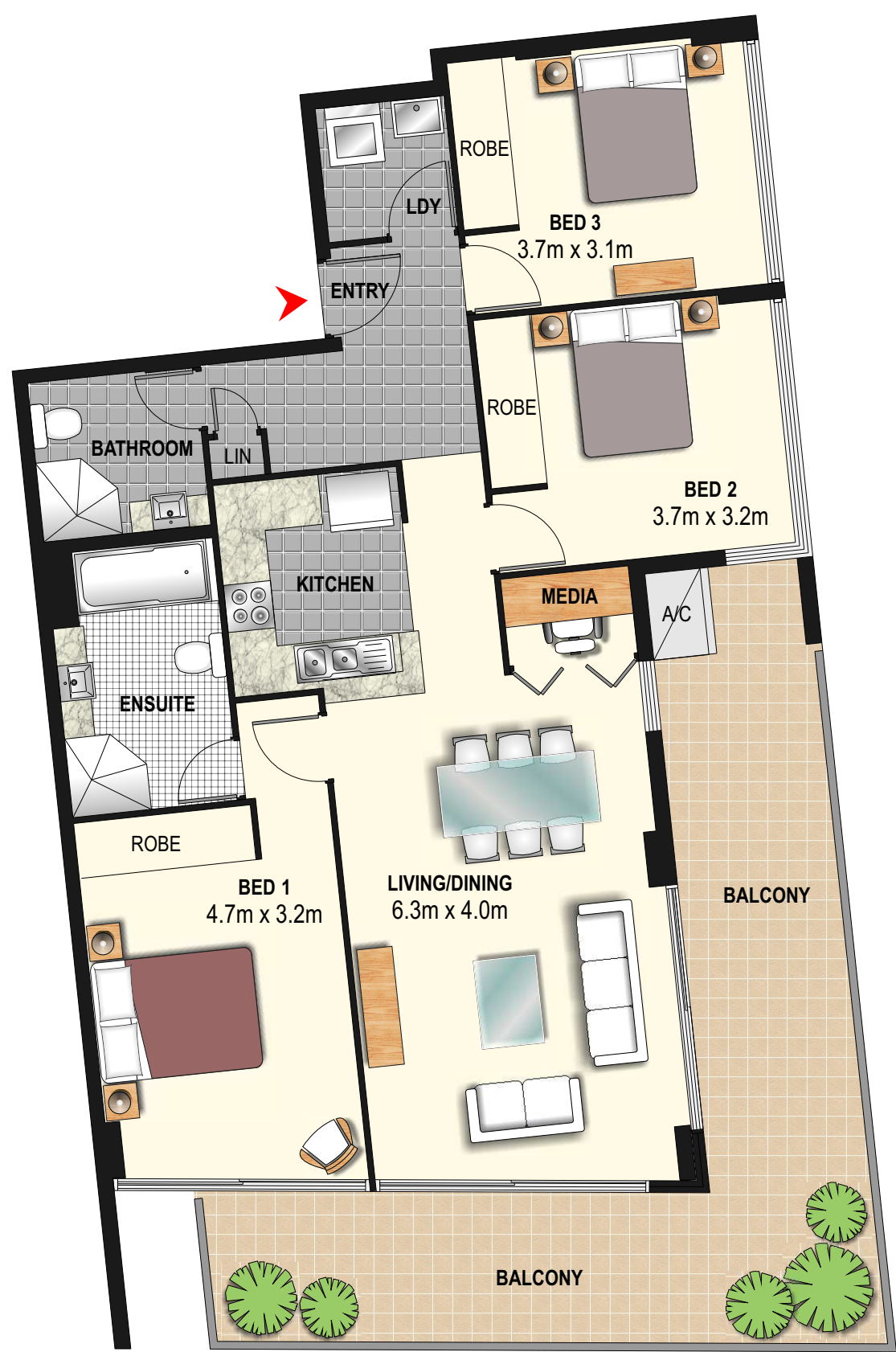


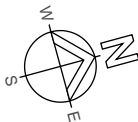
# 3 BED APARTMENT

APARTMENT 711  
INTERNAL - 101SQM  
BALCONY - 32SQM  
TOTAL - 133SQM + CAR SPACE



**PURCHASERS TAKE NOTE**

These floorplans DO NOT FORM PART of the Contract for Sale of any lot within the development. They are INDICATIVE ONLY. The descriptions, layouts and areas set out in this floor plan are subject to change and may not accurately reflect the final design of each unit depicted.



EPSOM ROAD, ROSEBERY  
**BUILDING C**